

IVUS and my practice

Carlos H Timaran, MD

Professor of Surgery

Chief, Endovascular Surgery

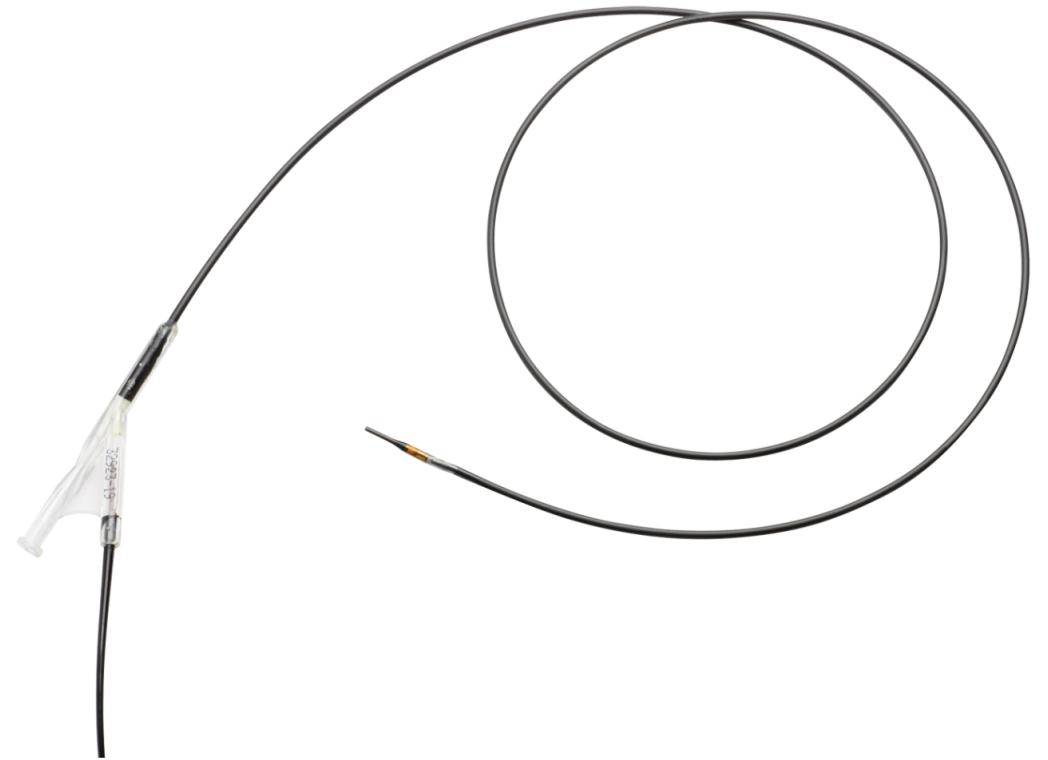
Sam H. Phillips, Jr MD Distinguished Chair in Surgery

Disclosures

- Honoraria / Consultant / Research
 - W.L. Gore
 - Cook Medical Inc
 - Philips
- Some devices presented here are investigational and have not been approved by the FDA

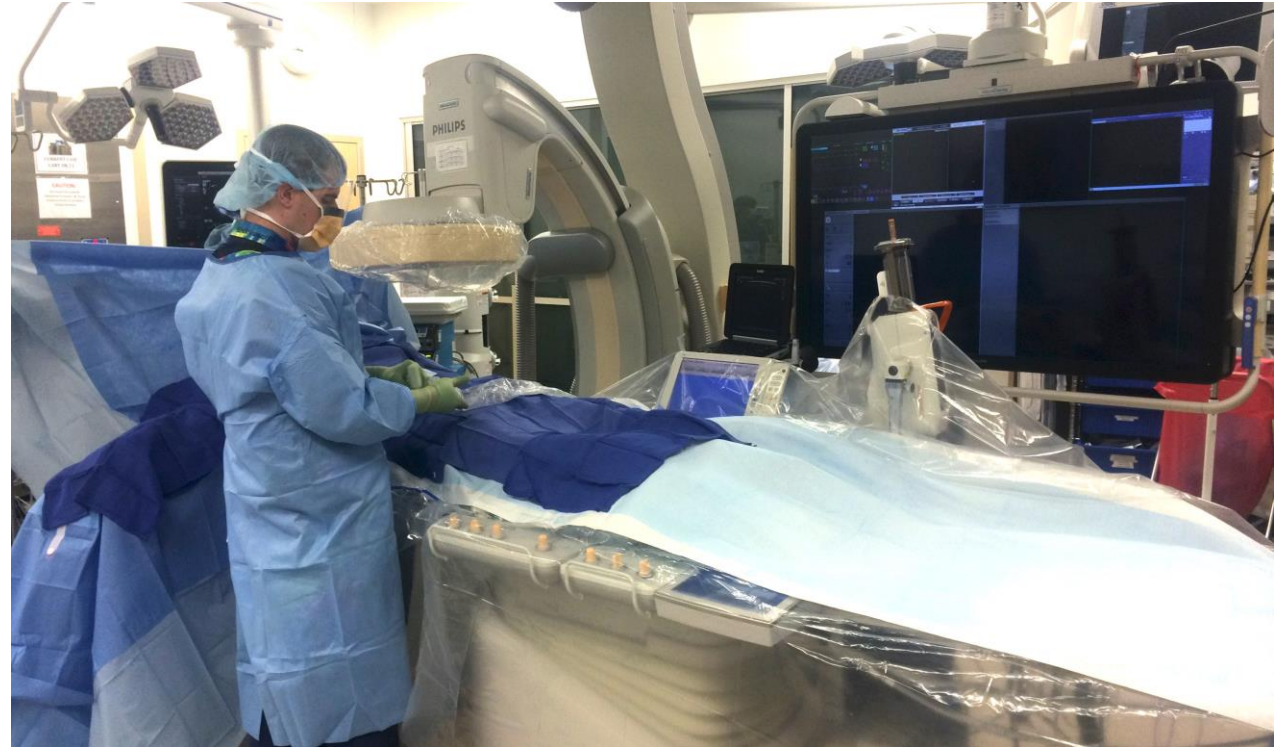
Intravascular Ultrasound (IVUS)

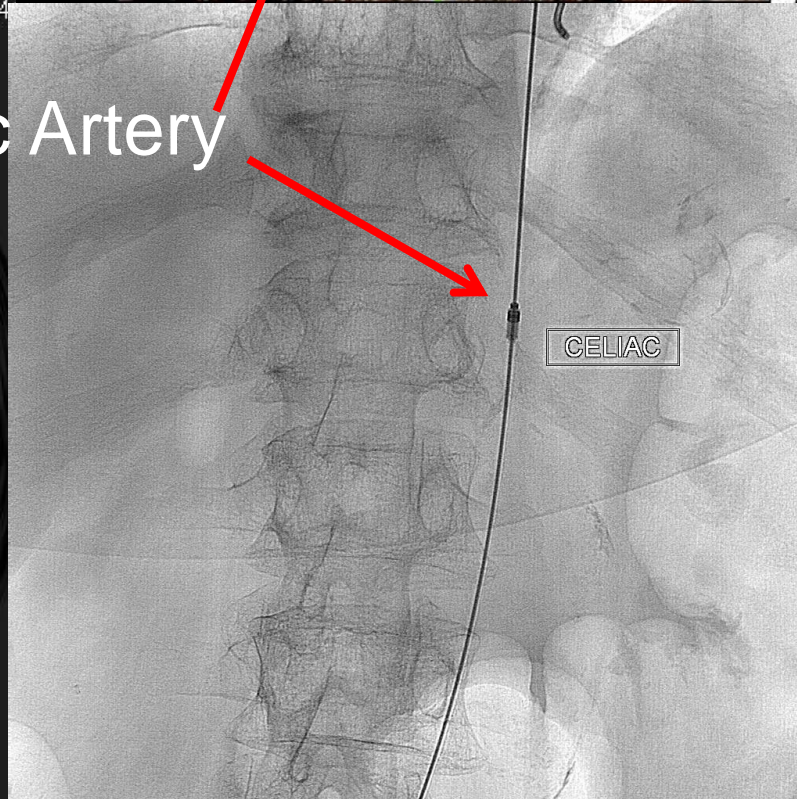
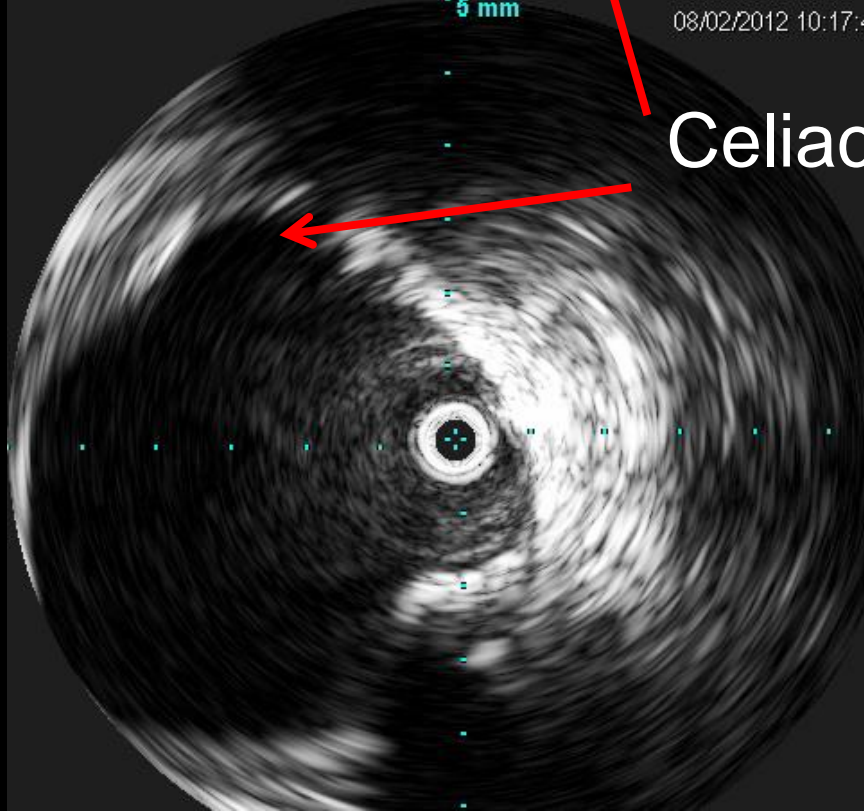
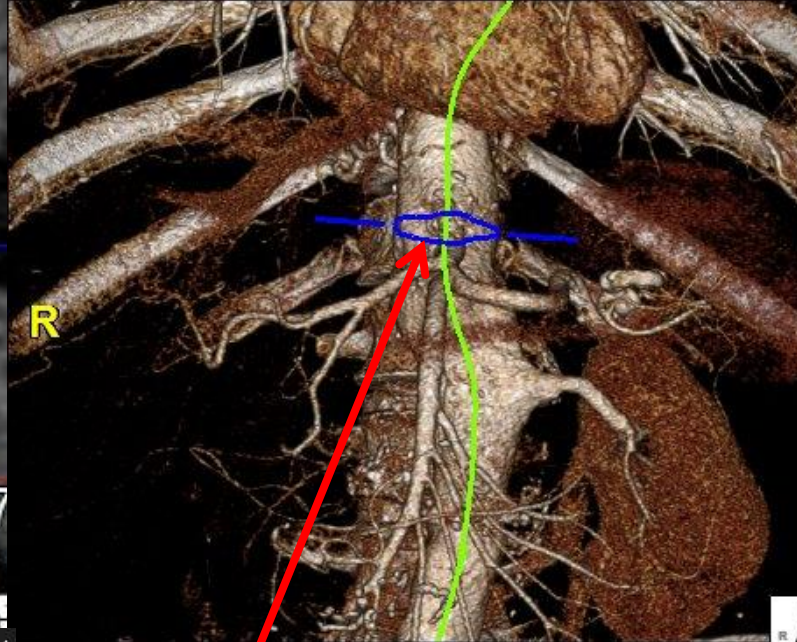
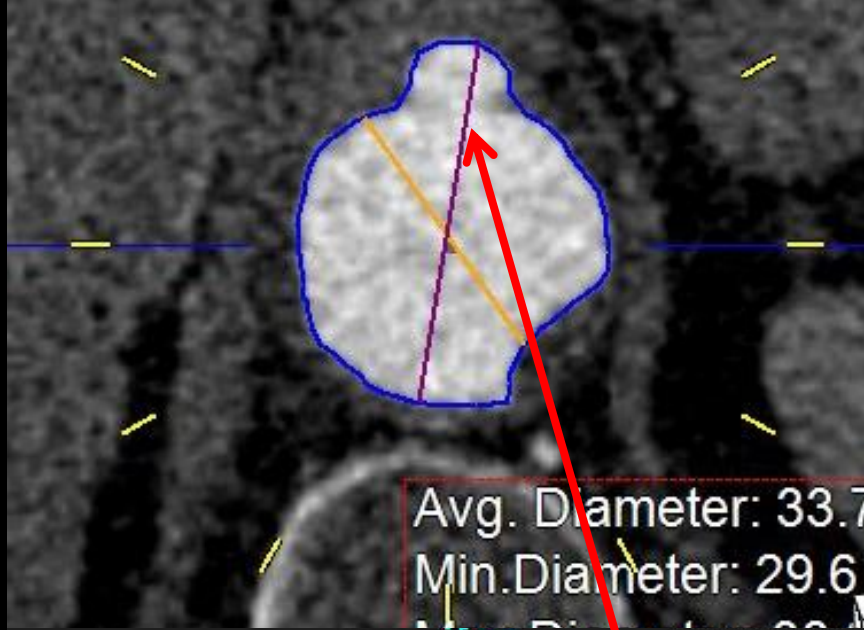
- Digital technology
 - 64 element transducer
- Plug-and-play
- Volcano Visions PV 8.2 catheter
 - 8F sheath, 0.035" guide wire compatible
 - 90cm catheter working length, over-the-wire



Integrated IVUS

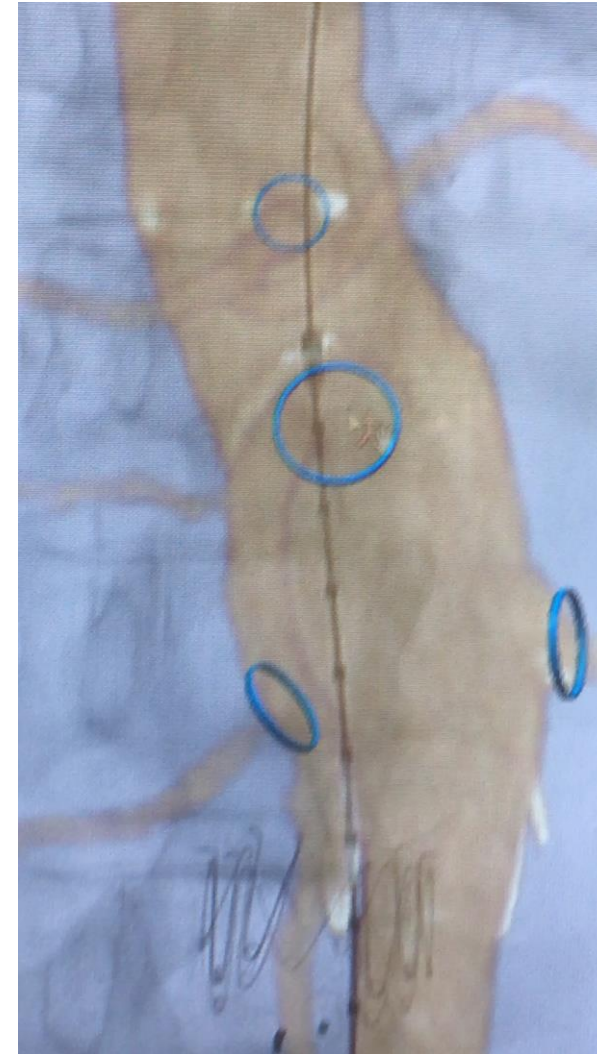
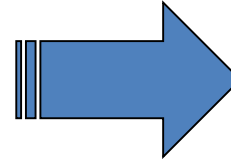
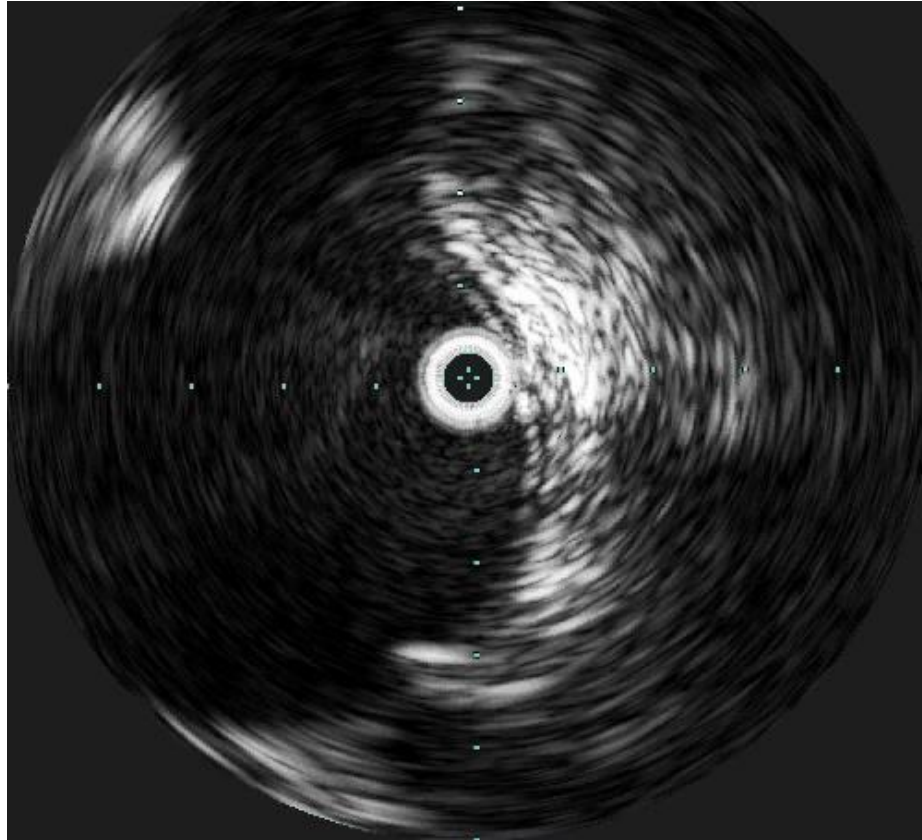
- Compatible with GE, Philips, and Siemens systems
- Integrated into OR
 - Dedicated IVUS monitor
 - Surgeon controlled



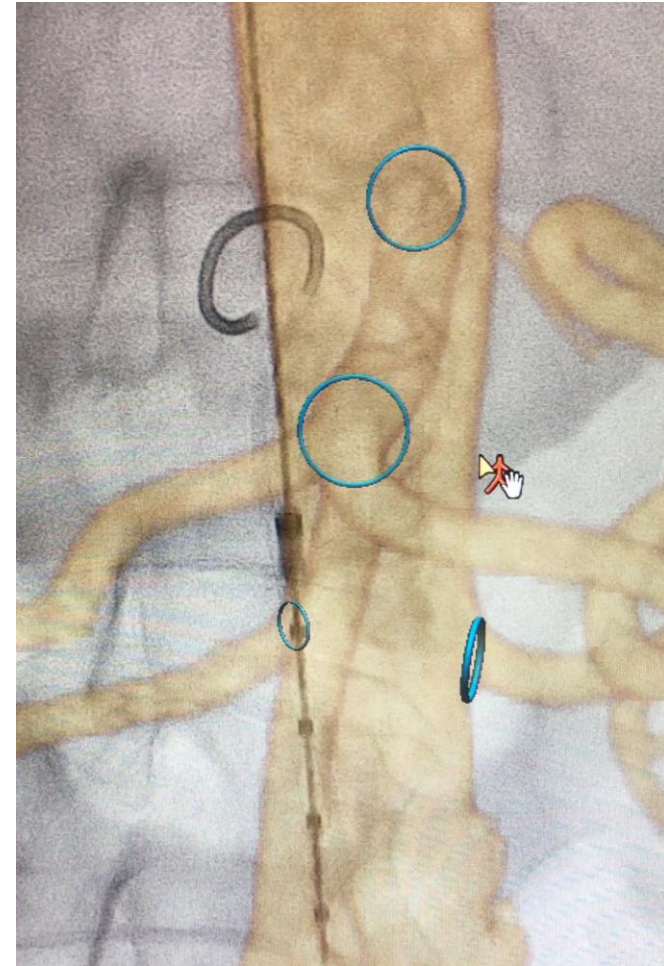
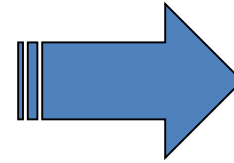
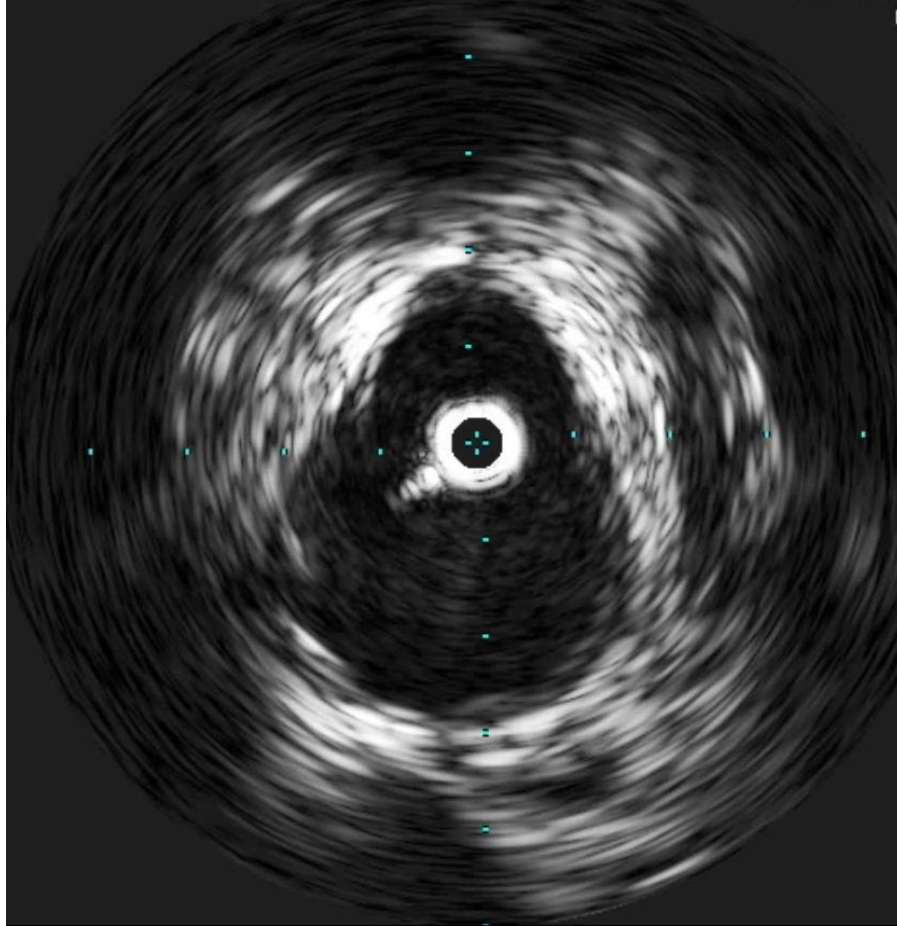


Celiac Artery

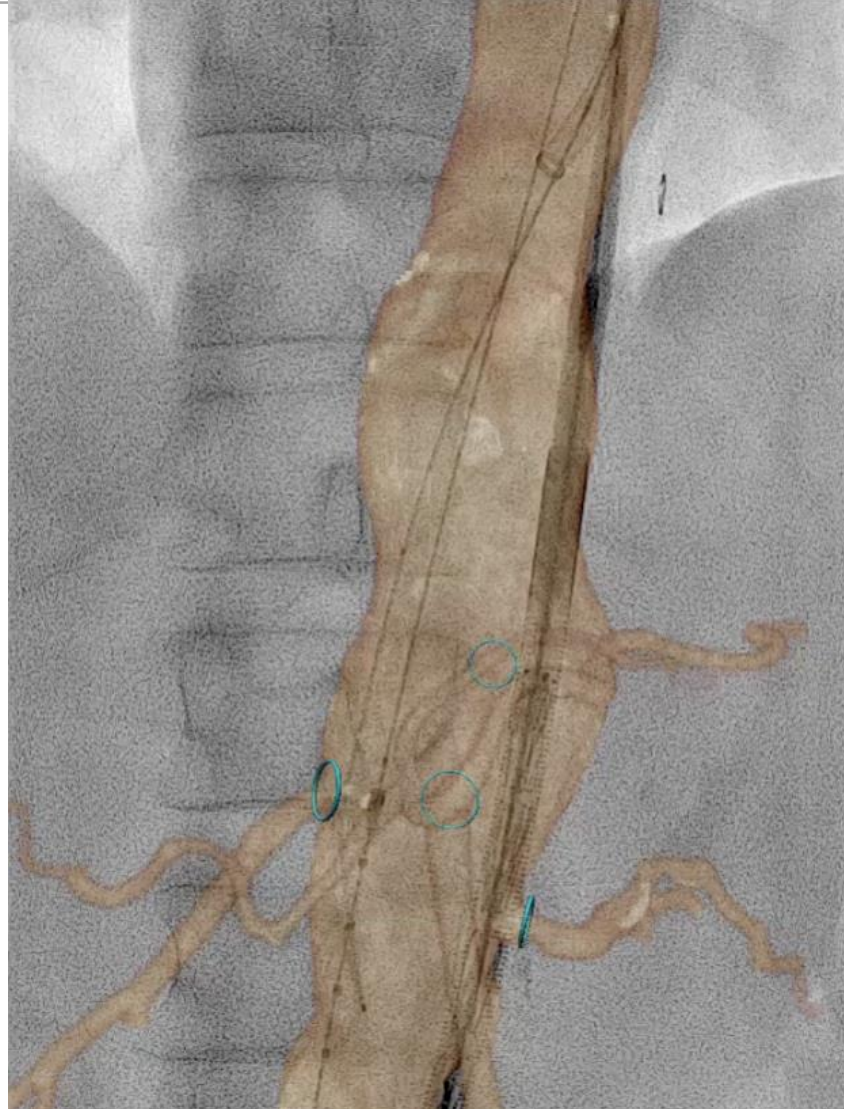
IVUS-assisted Registration



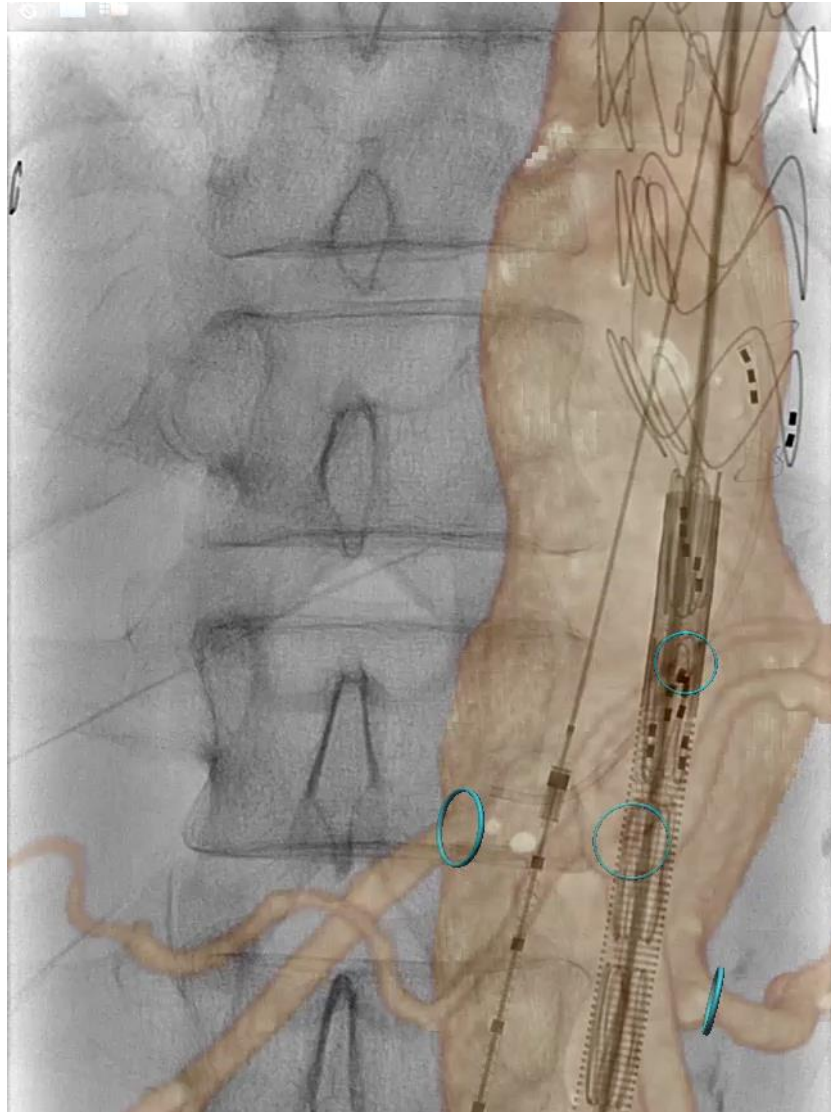
IVUS guided registration for CTA Fusion



Live Image Fusion Guidance



Live Image Fusion Guidance



Live Fusion + IVUS Guidance

